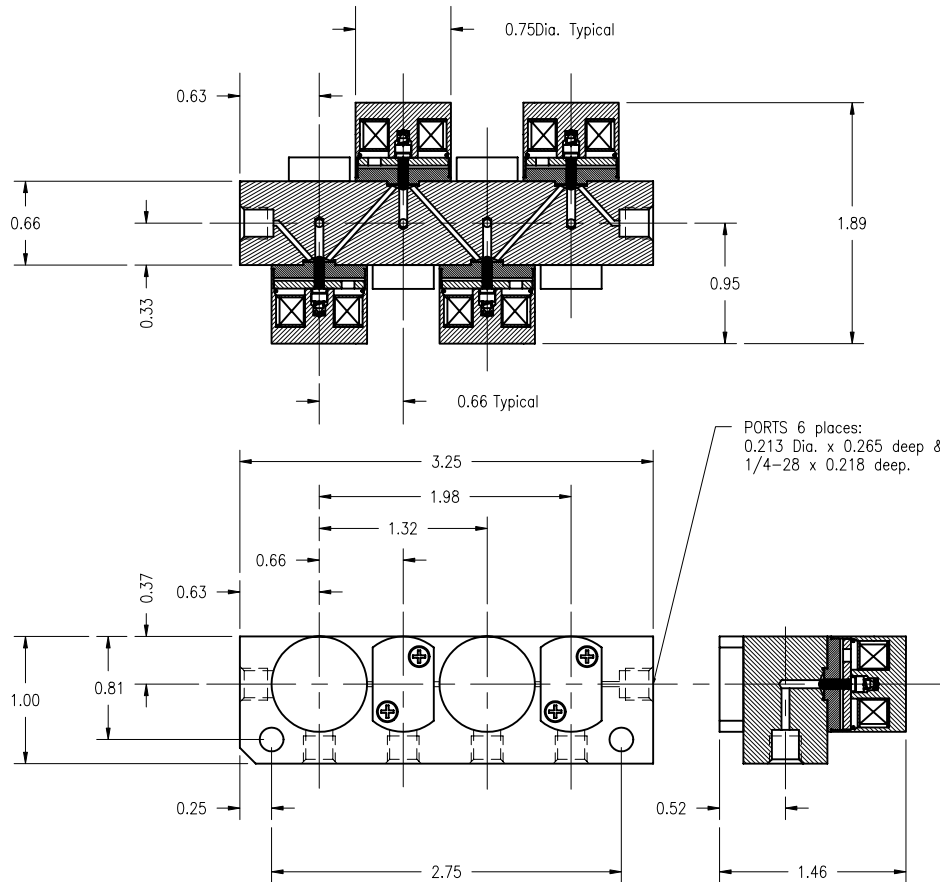


This drawing is NOT to be used for making reproductions thereof, or for making or using any apparatus, equipment, subject matter, or technical information without written authorization of Neptune Research and Development, Inc. All prints are to be returned to Neptune immediately upon completion of work.



MOUNTING HOLES 2 places:
0.187 Dia. through or metal inserts to accommodate crash free mounting using #4-40 or 3mm screws.

SPECIFICATIONS:

Mechanical: (Each Port)

TYPE: 2w Normally Closed
 PORT CONNECTION: 1/4-28 Flat Bottom
 NOMINAL ORIFICE: 0.040 In. (1.0 mm)
 OPERATING PRESSURE: Vacuum to 30 PSI (2 Bars)
 TEST PRESSURE: 30 PSI N₂ (No leakage)
 INTERNAL VOLUME: 91 microliters (Common passage)
 32.5 microliters (each inlet port)
 WETTED MATERIALS: TEFLON®
 MOUNTING ORIENTATION: Any Position

Electrical: (At 70° F No Pressure Applied)

OPERATING VOLTAGE: 24 VDC (continuous) See Note 1.)
 24 to 48 volts subject to duty cycle and/or holding voltage applied.
 POWER CONSUMPTION: 1.15 Watts/24 VDC (approx.)
 LEAD WIRES: #26 AWG, TFE Insulated
 Blue 18 in. (about 450mm) long.
 TEST VOLTAGE (ON): < 18 VDC
 TEST VOLTAGE (OFF): 1 to 8 VDC
 RESPONSE TIME (ON): 20ms Max. (24 VDC)
 5 to 20 ms subject to applied voltage and driving circuits.
 RESPONSE TIME (OFF): 30ms Max. (from 24 VDC)
 30 to 5 ms adjustable by driving circuits.

NOTE 1.)

Continuous rating applies to solenoid construction only. Since other materials incorporated in the product may not tolerate temperature variations as well as the solenoid application of holding voltage is strongly recommended.

NOTICE:

This product is protected by one or more of the following United States Patents: 4,496,133; 4,993,456; 5,143,118; Re. 34,261 5,433,244. Other Patents Pending.

| UNLESS OTHERWISE SPECIFIED | | Scale | Material | |
|----------------------------|--|-----------|------------|----------------|
| Fractions | ± 1/64 | 1 : 1 (B) | As noted | |
| 2 Pl. Dec. | ± 0.005 | Dr. By | Date | |
| 3 Pl. Dec. | ± 0.002 | A. Sule | 08-06-1995 | |
| Angular | ± 0.06° | Checked | Approved | |
| All Fin. Surf. | Break Sharp Edges 0.003-0.008 All Small Fin. Radii 0.003-0.008 All surfaces shall be Concentric, Parallel, Flat, Square and True to Each Other within 0.001 T.I.R. | Part Name | | Drawing Number |
| | | .161T082 | 4xNC 24vdc | .161V276 |